

# Creo™ Elements/Direct™ Drawing Manager

THE ESSENTIAL COMPANION TO CREO ELEMENTS/DIRECT DRAFTING 2D PRODUCT DEVELOPMENT

Formerly CoCreate®

Creo Elements/Direct Drawing Manager manages your 2D design data within a central database, effectively coordinating development efforts without imposing overhead on the team.

Creo Elements/Direct Drawing Manager is the integrated product data management (PDM) companion for Creo Elements/Direct Drafting. With Creo Elements/Direct Drawing Manager, companies can streamline the efforts of development teams to track and manage design data across the product's lifecycle.

## Key benefits

### Speed development and cut costs

Cut engineering time and drive manufacturing costs down by managing multiple product configurations with high cross-leverage, and by reusing shared parts and assemblies across product platforms.

### System of record

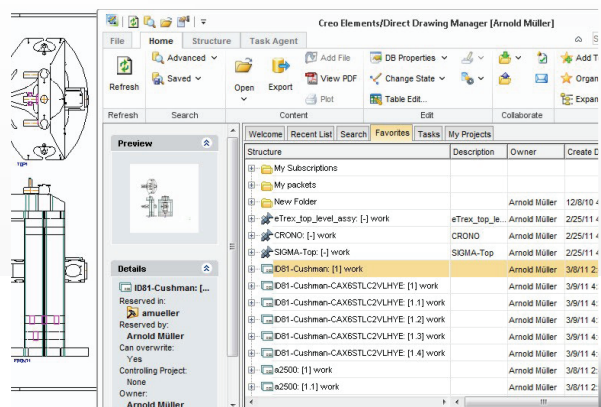
Use Creo Elements/Direct Drawing Manager as your centralized workgroup database, and share released design data with other enterprise systems, such as ERP. This flexibility can support a broad range of enterprise data management strategies and systems.

### Data management you will not outgrow

Creo Elements/Direct Drawing Manager scales from the global enterprise down to the one-person shop. Any size company can easily move beyond 2D CAD into an orchestrated 2D product development and lifecycle management process.

### Streamline processes

Eliminate the time and expense of manual data management processes. Ensure design integrity and work with up-to-date revisions of design data across the development team with safeguards against accidental data loss.



Manage and track product design data with the convenient workspace window in Creo Elements/Direct Drawing Manager.

## Features and specifications

### The new standard for out-of-the-box data management

- Relieve data management headaches with a friendly 15-minute, 6-button-click installation
- Achieve the benefits that come with a product data management solution – already pre-configured with industry best practices

### Integrated experience

- Experience a real-time, seamless product data management system inside Creo Elements/Direct Drafting

### Stand-alone client

- Extend the access of product design data well beyond Creo Elements/Direct Drafting with the stand-alone client of Creo Elements/Direct Drawing Manager
- Provide product managers and non-engineering departments with controlled access to the latest product design data and BOM (bill-of-materials) reports

### Manage 2D drawings

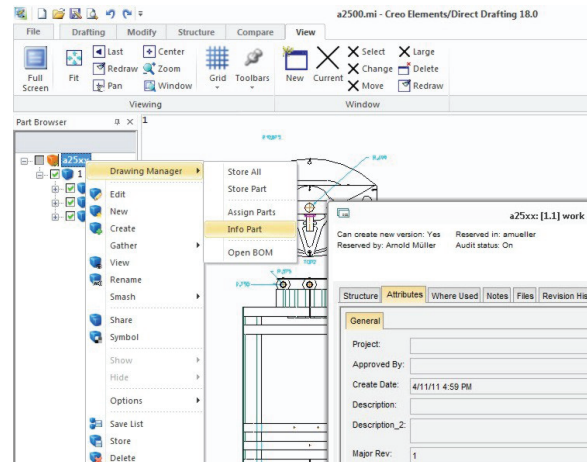
- Update drawing title blocks automatically with database attributes, such as revision number and change notes
- Create and save an Adobe® PDF document (with optional watermarks) with 2D drawings
- Add database attributes, such as material properties, to create multiple variations of a 2D drawing

### Bill-of-materials

- Create, manage, modify and export bill-of-materials (BOM) from Creo Elements/Direct Drawing Manager. Requires the add-on Creo Elements/Direct BOM Editor

### Workspace

- Interact with product design data through a familiar Microsoft® Windows Explorer® look and feel, including convenient access to My Recent Items, Favorites and saved Searches



Access, track and manage drawing database properties with Creo Elements/Direct Drawing Manager.

- Find product design data using any defined criteria, and save the Search to watch it dynamically update with the latest results
- Use thumbnail previews to view the 2D drawing before you load it into Creo Elements/Direct Drafting

### Workflow

- Add new users to Creo Elements/Direct Drawing Manager and easily assign permissions using predefined or specially configured groups
- Manage and control revision history for all your 2D design data, including non-mechanical components
- Ensure design data integrity with state control, such as Work, Approved and Released states

### Status and notifications

- Get real-time status alerts and pop-up notifications of updates and revisions as you work in Creo Elements/Direct Drafting
- Subscribe to email notification of changes to any type of product design data

### Distributed product development

- Improve cross-locale support for distributed product development
- Use with single-site or multi-site implementations

### Prerequisites

- Creo Elements/Direct Drafting

### Platform requirements

#### Supported operating systems:

- Windows 7 32-bit and 64-bit Editions of Ultimate, Enterprise and Professional
- Windows Vista® 32-bit and 64-bit Editions of Ultimate, Enterprise and Business
- Windows XP Professional 32-bit and 64-bit Editions

For the most up-to-date platform support information, visit:

[PTC.com/partners/hardware/current/support.htm](http://PTC.com/partners/hardware/current/support.htm)

For more information, visit:

[PTC.com/products/creo-elements-direct](http://PTC.com/products/creo-elements-direct)

© 2011, Parametric Technology Corporation (PTC). All rights reserved. Information described herein is furnished for informational use only, is subject to change without notice, and should not be construed as a guarantee, commitment, condition or offer by PTC. PTC, the PTC logo, and all PTC product names and logos are trademarks or registered trademarks of PTC and/or its subsidiaries in the United States and in other countries. All other product or company names are property of their respective owners. The timing of any product release, including any features or functionality, is subject to change at PTC's discretion.

6613–Creo Elements/Direct Drawing Manager–DS–EN–0511