

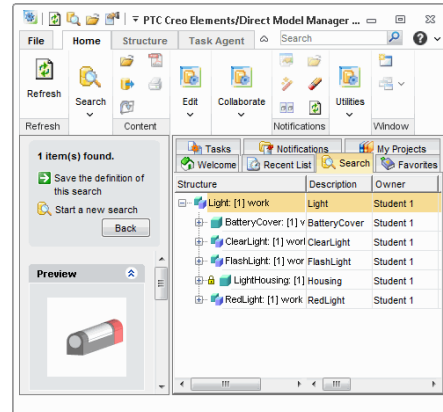
# Introduction to Creo Elements/Direct 19.0 Model Manager

## Overview

Course Code	TRN-4533-T
Course Length	2 Days

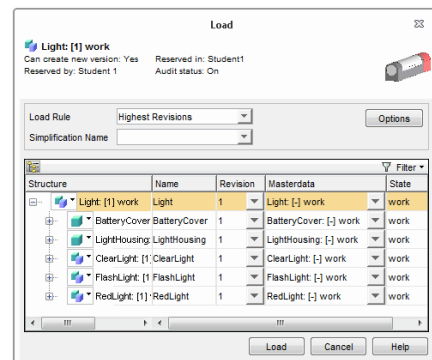
In this course, you will learn how to manage, search, load, and save Creo Elements/Direct data. You will also discover how to manage multiple versions and various data types, as well as how to work with others by monitoring data, managing permissions, passing data, and resolving potential conflicts. In addition, you will learn how to create and edit a BOM using the BOM Editor. After completing this course, you will have a full understanding of the Creo Elements/Direct data management process.

At the end of each module, you will complete a set of review questions to reinforce critical topics from that module. At the end of the course, you will complete a course assessment in Pro/FICIENCY intended to evaluate your understanding of the course as a whole.



## Course Objectives

- Save various types of data
- Search for data
- Load data
- Utilize teamwork methodology
- Manage Annotation data
- Resolve various data conflicts
- Create and modify BOMs using the BOM Editor
- Create tasks and utilize scheduling features



## Prerequisites

---

- Prior use or knowledge of Creo Elements/Direct Modeling and Annotation
- Prior use of other data management software not required, but is beneficial

## Audience

---

- This course is intended for designers, drafters, mechanical engineers, industrial designers, illustrators, and tooling designers. People in related roles will also benefit from taking this course.
-

## Agenda

### Day 1

---

Module	1	Introduction To Model Manager And User Preferences
Module	2	Saving, Finding, And Loading In Model Manager
Module	3	Teamwork In Model Manager And Database Properties

### Day 2

---

Module	4	Annotation Data In Model Manager
Module	5	Conflict Resolution In Model Manager
Module	6	Working with Packets in Model Manager
Module	7	Working with Projects in Model Manager
Module	8	Bill Of Material Editor
Module	9	Setting Up Task Agent

---

## Course Content

### Module 1. Introduction To Model Manager And User Preferences

- i. Introducing Data Management
- ii. Introducing 3D Data Format
- iii. Introducing Model Manager
- iv. Introducing Masterdata
- v. Starting Model Manager
- vi. Entering Profile Information
- vii. Introducing Model Manager User Interface
- viii. Introducing Save Options
- ix. Introducing Load Options
- x. Introducing Personal Preferences 1
- xi. Introducing Personal Preferences 2
- xii. Introducing Personal Preferences 3
- xiii. Introducing Personal Preferences 4

#### *Knowledge Check Questions*

### Module 2. Saving, Finding, And Loading In Model Manager

- i. Saving Data 1
- ii. Saving Data 2
- iii. Saving Data 3
- iv. Introducing Stock Finish Relationships
- v. Searching For Data 1
- vi. Searching For Data 2
- vii. Searching For Data 3
- viii. Searching For Data 4
- ix. Loading Data 1
- x. Loading Data 2
- xi. Loading Data 3
- xii. Loading Data 4
- xiii. Introducing Multi Version Load
- xiv. Introducing Recent List
- xv. Introducing Favorites
- xvi. Saving Snapshots
- xvii. Introducing Simplified Model
- xviii. Saving Simplification
- xix. Loading Simplification

#### *Knowledge Check Questions*

### Module 3. Teamwork In Model Manager And Database Properties

- i. Introducing Subscriptions
  - ii. Reserving Data
-

- iii. Refreshing Status
- iv. Introducing Notifications
- v. Reloading 3D
- vi. Updating Assembly
- vii. Changing States
- viii. Introducing Database Properties
- ix. Editing Database Properties
- x. Exploring Database Properties

*Knowledge Check Questions*

**Module 4. Annotation Data In Model Manager**

- i. Introducing Working With Annotation
- ii. Saving Drawing
- iii. Finding Drawing
- iv. Relating Drawings And Models

*Knowledge Check Questions*

**Module 5. Conflict Resolution In Model Manager**

- i. Introducing Conflicts
- ii. Resolving Name Conflict
- iii. Comparing Models
- iv. Resolving SysID Conflict

*Knowledge Check Questions*

**Module 6. Working with Packets in Model Manager**

- i. Introducing Packets
- ii. Cutting, Copying, and Pasting with Packets
- iii. Sending Packets

*Knowledge Check Questions*

**Module 7. Working with Projects in Model Manager**

- i. Introducing Projects
- ii. Working Project
- iii. Changing Controlling Project

*Knowledge Check Questions*

**Module 8. Bill Of Material Editor**

- i. Introducing Bill of Material Editor
- ii. Scanning Model
- iii. Adding Bill of Material Entries
- iv. Creating Bill of Material Reports
- v. Introducing Inseparables
- vi. Using Inseparables in a Bill of Material

*Knowledge Check Questions*

---

**Module 9. Setting Up Task Agent**

- i. Introducing Tasks
- ii. Scheduling a Task

*Knowledge Check Questions*